

Near & Far Collection



Interface®

Near & Far™ Collection

Fine craftsmanship is marked by the ability to expose the inherent beauty of the materials used; mastery of technique draws nuanced effects through colour placement, texture and finish. It is a kind of authenticity we learned from our best design-mentor, nature. Every time a designer chooses to engage nature as source and inspiration, beautiful things emerge and we find paths to reconnect our modern lives with the physical world. And that is a good thing.

Near & Far Collection can be found somewhere between made and found. The organic reference is clear, but we can see the artisan's hand in the shape and materials. NF400™ studies shade and hue in striations that run the length of our 25cm x 1m skinny plank. NF401™ explores these ideas in greater dimensions with carving and depth and curvilinear movements. The juxtaposition of the two set side by side awakens the edges, adding a third design element to explore.

The latest addition to our growing global category, Near & Far is made with 100% recycled nylon made in part from reclaimed fishing nets. And when its useful life is through, it can be reclaimed for recycling through Interface's ReEntry® program. And that is another good thing.



Product NF400 Colour Walnut
Product NF401 Colour Walnut Installed Ashlar





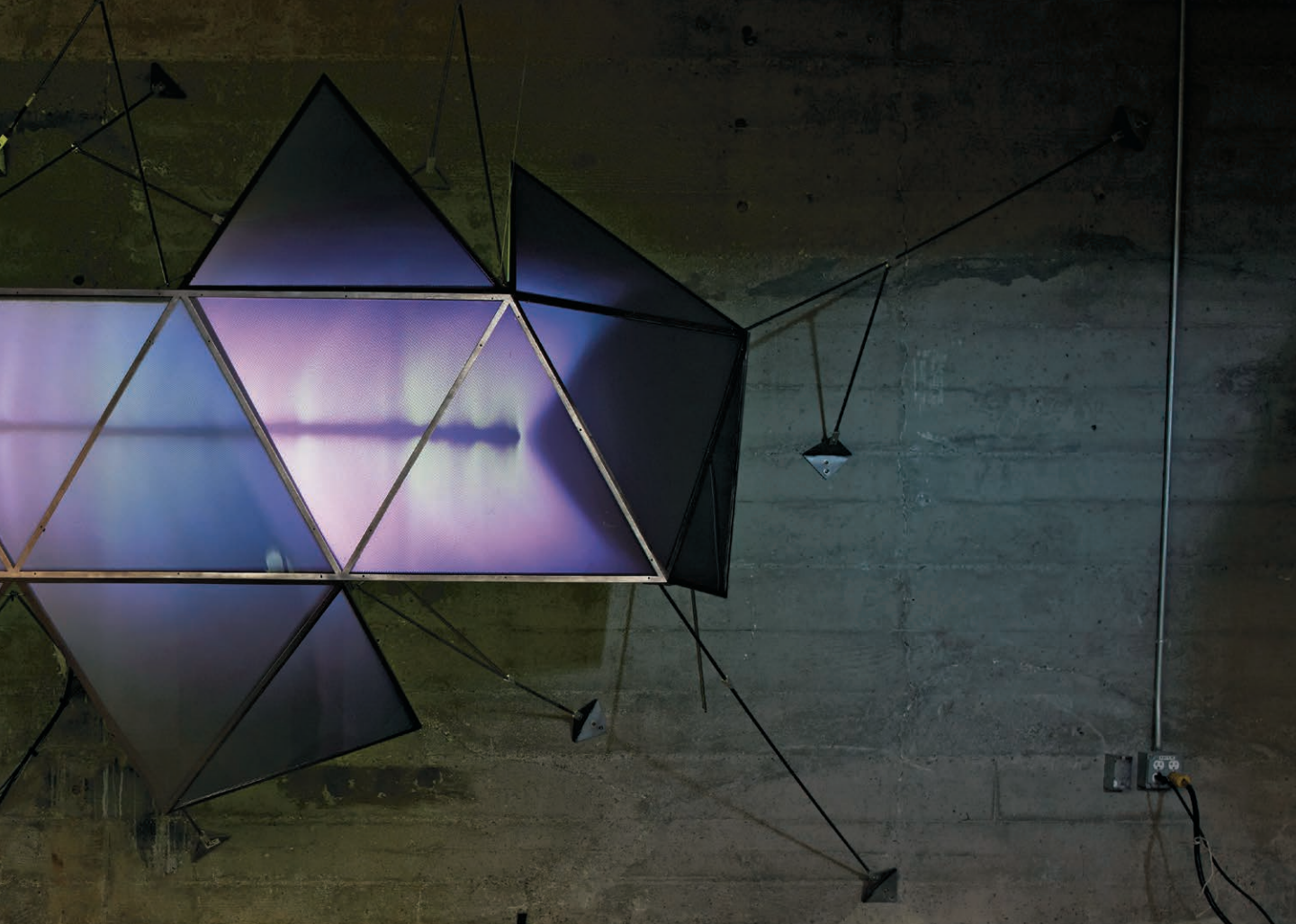
Product NF400 Colour Driftwood
Collection Net Effect™ Product B703™ Colour Atlantic Installed Herringbone





Product NF400 Colour Hemp
Product NF401 Colour Hemp Installed Ashlar

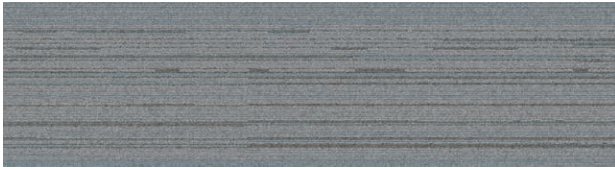




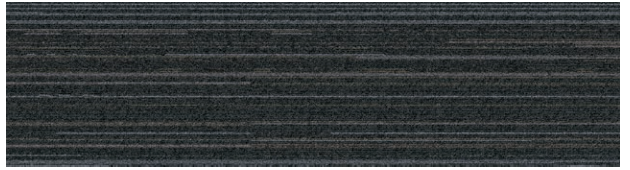
Collection Human Nature™ **Product** HN810™ **Product** NF400 **Colours** Felt, Linen
Colour Limestone **Installed** Ashlar



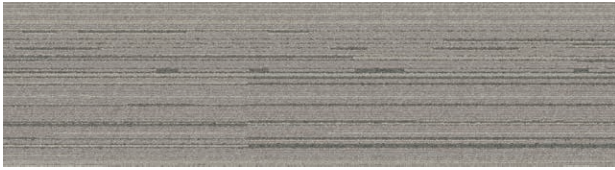
NF400™ Colourline



7848-003-000 Felt



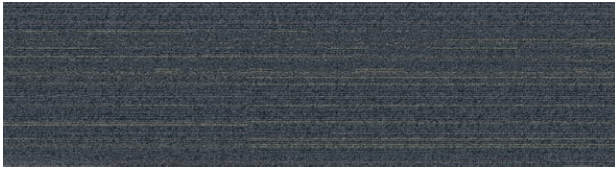
7848-004-000 Mineral



7848-005-000 Driftwood



7848-006-000 Linen



7848-007-000 Shale



7848-009-000 Hemp



7848-010-000 Walnut



7848-011-000 Wheat



Product NF401 Colour Shale Installed Ashlar

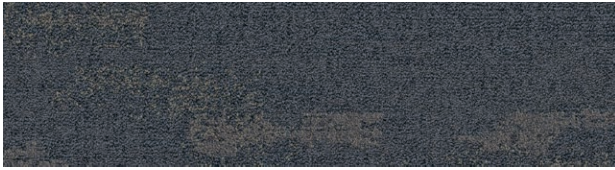
NF401™ Colourline



7959-001-000 Mineral



7959-002-000 Felt



7959-003-000 Shale



7959-004-000 Linen



7959-005-000 Driftwood



7959-006-000 Hemp



7959-007-000 Walnut



7959-008-000 Wheat



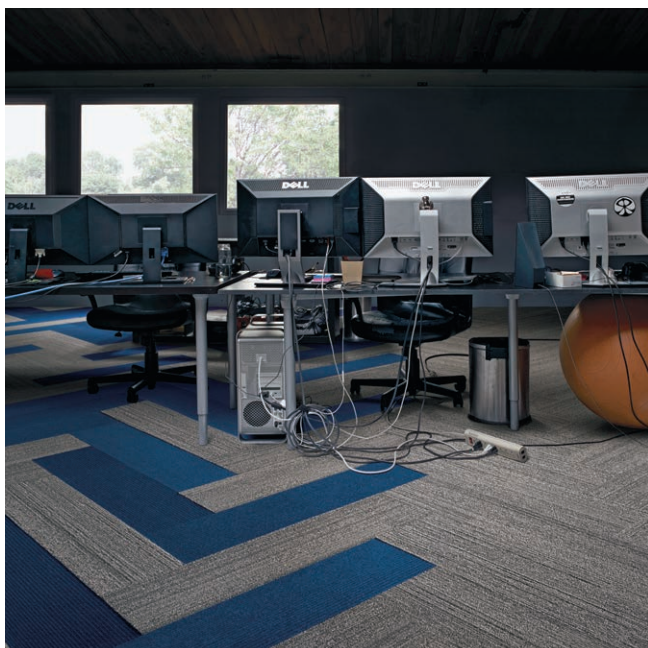
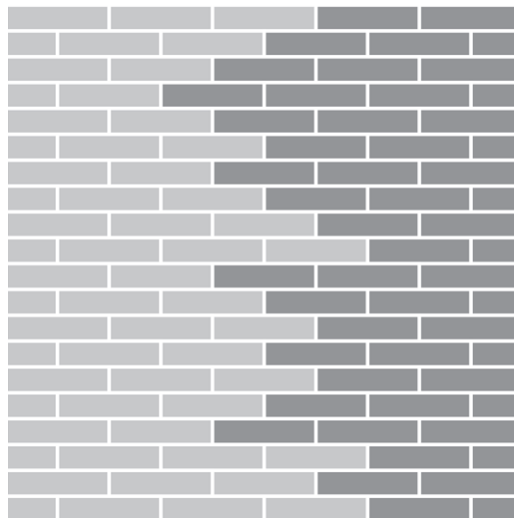


Product NF400 Colour Mineral
Product NF401 Colour Mineral Installed Pattern By Tile

Design Ideas Below are floor layouts showing how to create the design ideas shared in several of the images featured in this brochure.



**Product NF400 Colour Felt Product NF401 Colour Felt
Installed Ashlar**

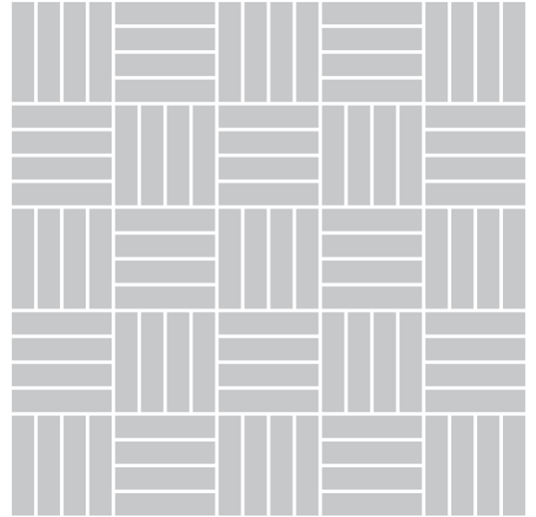


**Product NF400 Colour Driftwood Collection Net Effect Product B703
Colour Atlantic Installed Herringbone**

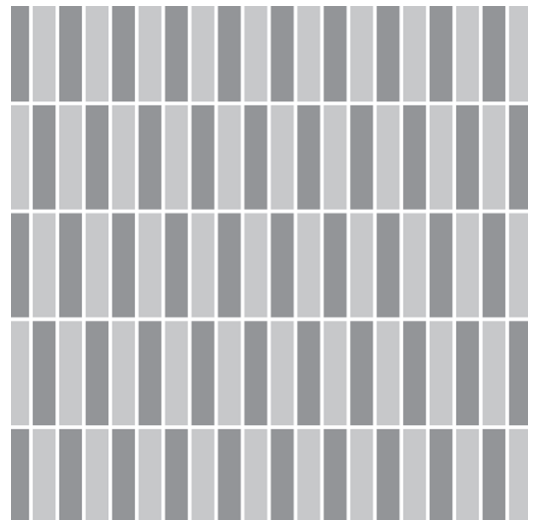




Product NF400 **Colour** Driftwood **Installed** Pattern By Tile



Product NF400 **Colour** Mineral **Product** NF401 **Colour** Mineral
Installed Pattern By Tile



Specifications **i2**

NF400™

Style Code	7848 Pattern 000
Product Definition	Tufted Textured Tip Sheared Loop
Yarn/Fibre	100% Recycled Content Type 6 Nylon
Colour System	100% Solution Dyed
Machine Gauge	1/12
Pile Thickness	3.0mm +/- 0.5mm
Total Thickness	6.5mm +/- 0.5mm
Tile Size	25cm x 100cm
Area of Use	Commercial – Heavy Use
Lifetime Antimicrobial	Intersept®
Soil/Stain Protection	Protekt ² ®
Total Recycled Content	GlasBac® 65% to 70% recycled content GlasBac®RE 80% to 85% recycled content
Installation Methods	Ashlar, Herringbone



Ashlar

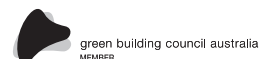


Herringbone

Specifications **i2**

NF401™

Style Code	7959 Pattern 000
Product Definition	Tufted Textured Tip Sheared Loop
Yarn/Fibre	100% Recycled Content Type 6 Nylon
Colour System	100% Solution Dyed
Machine Gauge	1/10
Pile Thickness	4.5mm +/- 0.5mm
Total Thickness	9.5mm +/- 0.5mm
Tile Size	25cm x 100cm
Area of Use	Commercial – General Use
Lifetime Antimicrobial	Intersept®
Soil/Stain Protection	Protekt ² ®
Total Recycled Content	GlasBac® 65% to 70% recycled content GlasBac®RE 80% to 85% recycled content
Installation Methods	Ashlar, Herringbone



CoolCarpet™
Intersept®

Production specifications are subject to normal manufacturing tolerances and may be changed without notice. Slight variation in colour among different production lots are normal and should be considered in the overall installation plan. Products covered by manufacturer's written warranty only. All other warranties, including without limitation any implied warranties of merchantability or fitness for particular purpose, are hereby disclaimed. Contact your representative for written warranty information. Recycled content calculations are based on historical averages by total weight of the product for backings. Yarn/Fibre recycled content calculation excludes backing. We update our recycled content information and other environmental data regularly to reflect changes and advancements in our technology.

*Cool Carpet is not a standard option in Australia and New Zealand.

